

Tirando spel

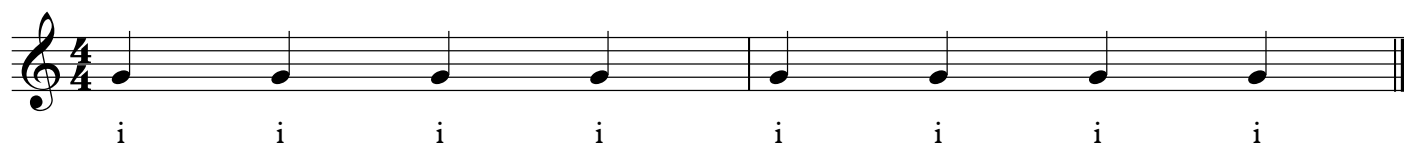
eerste oefeningen

Jaromir Cornelius

1. Speel de derde snaar (g) met je wijsvinger, raak daarbij geen andere snaar.

Laat de vinger NIET vallen tegen de vierde snaar, maar laat hem in de lucht hangen en haal hem weer terug naar boven de 3e snaar. Maak een kleine beweging richting de binnenkant van je hand.

Je duim mag steunen op de zesde snaar.



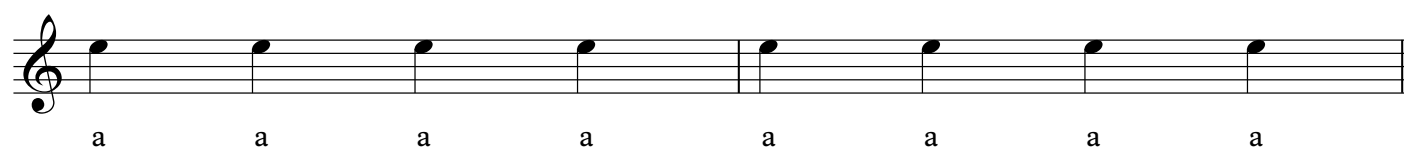
i i i i i i i i

2. Doe hetzelfde met je middelvinger op de tweede snaar.



m m m m m m m m

3. Nu met je ringvinger op de eerste snaar

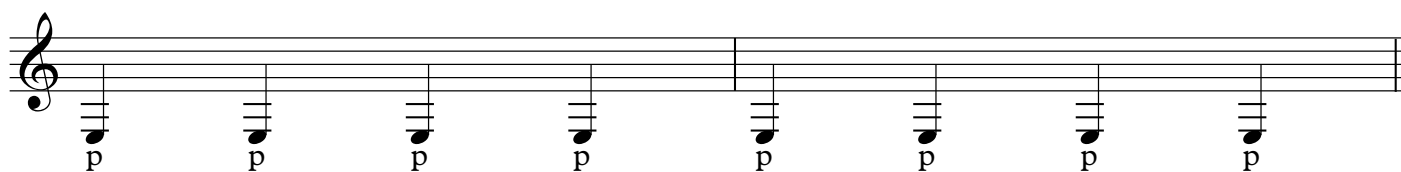


a a a a a a a a

4. Zet je wijsvinger op snaar 3, je middelvinger op snaar 2 en je ringvinger op snaar 1.

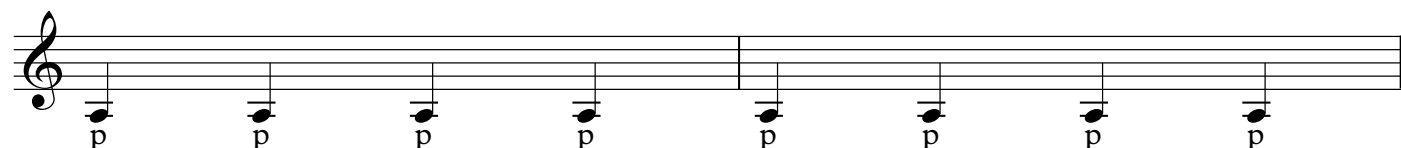
Speel de dikste snaar (snaar 6, de lage E-snaar) met je duim. Van boven naar beneden, richting vloer.

Raak de snaar met de zijkant van het topje van je duim. Buig je duim niet, maar laat de beweging alleen vanuit het eerste gewricht (het dichtste bij je hand) komen.



p p p p p p p p

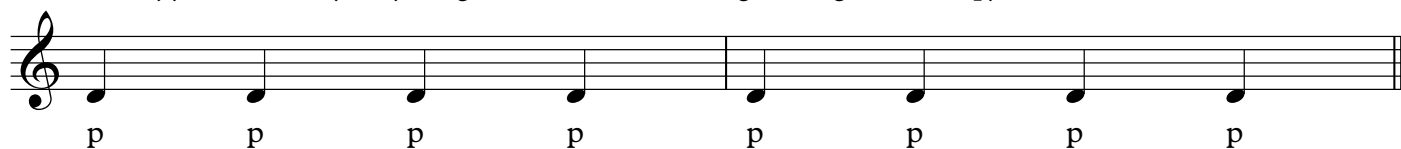
5. Speel ook met je duim snaar 5, de A-snaar



p p p p p p p p

6. Ook met je duim: snaar 4, de D-snaar.

Laat hierbij je duim niet je wijsvinger raken, maar er langsdoor gaan. "Knopje draaien".



p p p p p p p p

Tirando spel

tweede oefeningen

Jaromir Cornelius

Laat geen vingers steunen.

Je duim speelt snaar 6, je wijsvinger snaar 3, middelvinger snaar 2 en ringvinger snaar 1.

Volgorde: p i m a m i "pimami".

Onderstaande oefening is het begin van het beroemde Nothing else matters van Metallica.

p i m a m i p i m a m i

p i m a m i p i m a m i

De tokkel andersom: amipima

a m i p i m a m i p i m

a m i p i m a m i p i m

Speel in een strak tempo: laat alle tonen even lang duren, en alles even hard.

Laat de tonen maar doorklinken. Bij tiranospel duren de tonen vaak langer dan de waarde van de noten.

Probeer de tonen net zo mooi te laten klinken als met de apoyando aanslag.

Hou je hand stil: de vingers doen het werk.

Strek je duim richting linkerhand.

Til je vingers niet op, maar buig ze naar binnen.

Arpeggio Prelude

p i m i p i m i p i m i p i m i

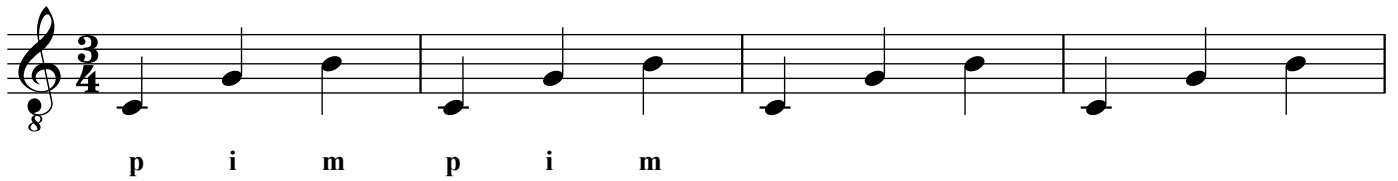
p i p i p i p i p i p i p i p i

p m p m p m p m p m p m p m

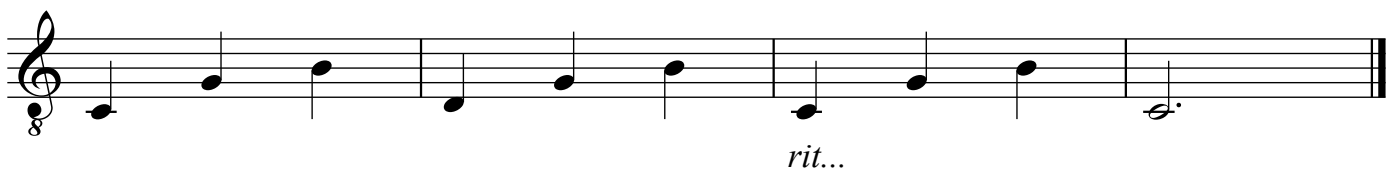
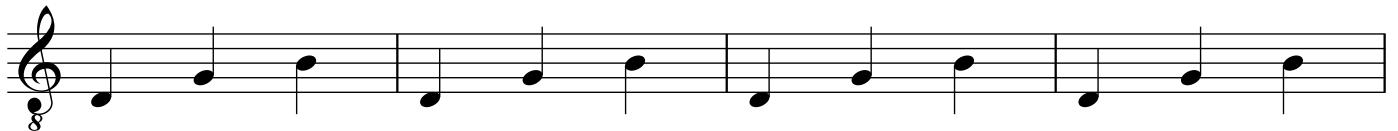
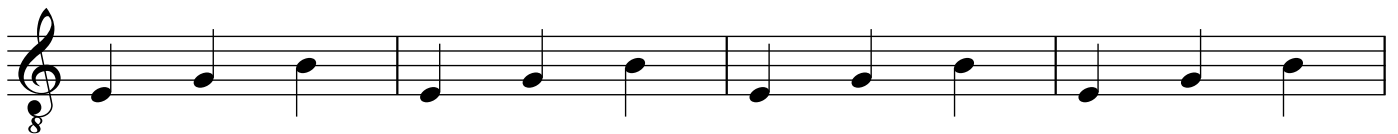
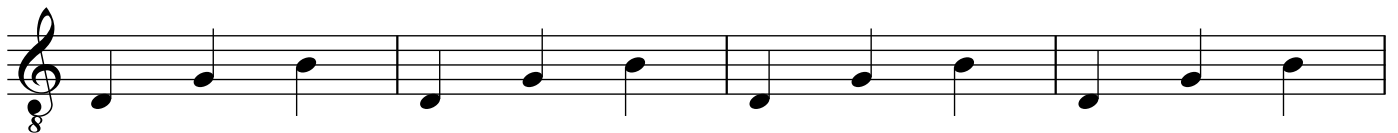
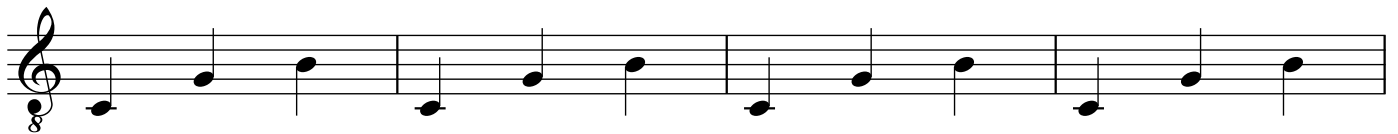
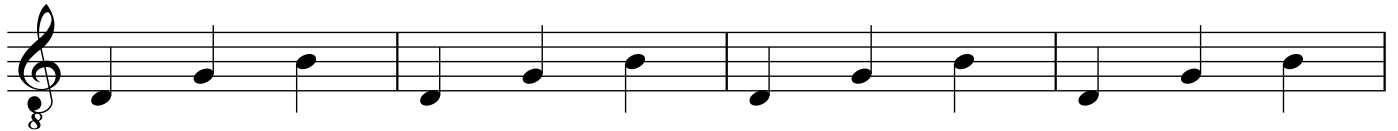
Prelude No. 1

Bradford Werner
(b. 1981)

Let all notes sustain.



p i m p i m



rit...

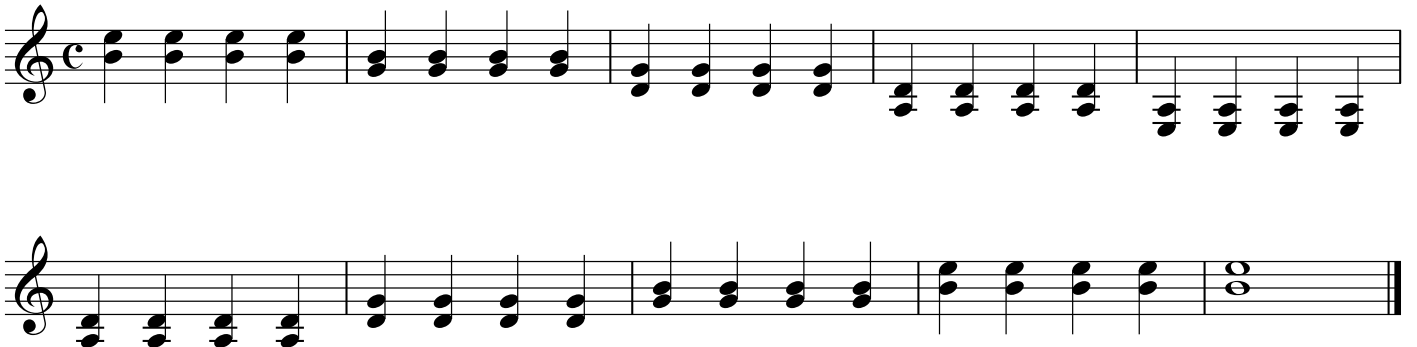
Prelude No. 2

Bradford Werner
(b. 1981)

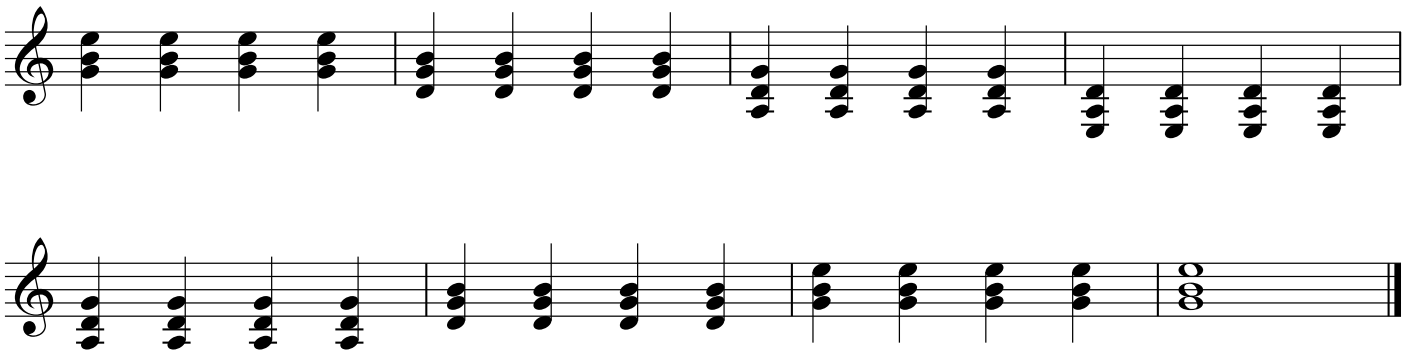
4/4
p i m i p i m i etc...

Tokkeloefeningen met losse snaren

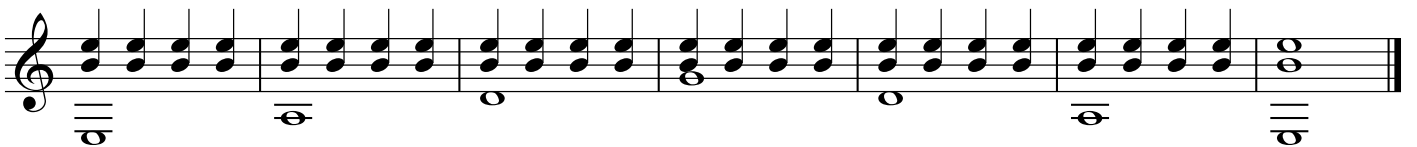
1. m en i, en met a en m.



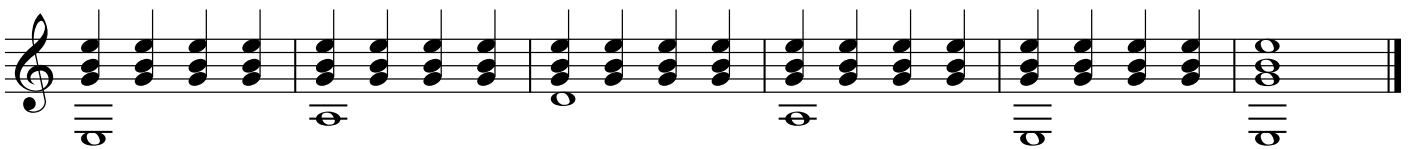
2. a, m en i tegelijk.



3. p, i en m. Ook met p, m en a.



4. p i m a tegelijk



5. p, i en a, ook met p, i en m.



6. Ook met m, i en met m, a en a, m.

6. Ook met m, i en met m, a en a, m.

7.

7.

8.

8.

9.

9.

Tokkeloefeningen met akkoorden

Ine Janssen

Am

Am

6

6

11 C

C

16

16

21 E

E

26

26

Tokkeloefeningen met akkoorden, i m a

Am

First staff of music for the Am exercise. It begins with a treble clef and a common time signature (C). The first four measures contain chords: Am (A2, C3, E3), Am (A2, C3, E3), Am (A2, C3, E3), and Am (A2, C3, E3). The next four measures contain a descending eighth-note scale: G3, F3, E3, D3, C3, B2, A2, G2. The final four measures contain an ascending eighth-note scale: G2, A2, B2, C3, D3, E3, F3, G3.

Second staff of music for the Am exercise. It contains a descending eighth-note scale: G3, F3, E3, D3, C3, B2, A2, G2. The final measure contains a whole note chord: Am (A2, C3, E3).

C

First staff of music for the C exercise. It begins with a treble clef and a common time signature (C). The first four measures contain chords: C (C4, E4, G4), C (C4, E4, G4), C (C4, E4, G4), and C (C4, E4, G4). The next four measures contain a descending eighth-note scale: B4, A4, G4, F4, E4, D4, C4, B3. The final four measures contain an ascending eighth-note scale: B3, C4, D4, E4, F4, G4, A4, B4.

Second staff of music for the C exercise. It contains a descending eighth-note scale: B4, A4, G4, F4, E4, D4, C4, B3. The final measure contains a whole note chord: C (C4, E4, G4).

E

First staff of music for the E exercise. It begins with a treble clef and a common time signature (C). The first four measures contain chords: E (E4, G#4, B4), E (E4, G#4, B4), E (E4, G#4, B4), and E (E4, G#4, B4). The next four measures contain a descending eighth-note scale: D#5, C#5, B4, A4, G4, F4, E4, D4. The final four measures contain an ascending eighth-note scale: D4, E4, F4, G4, A4, B4, C#5, D#5.

Second staff of music for the E exercise. It contains a descending eighth-note scale: D#5, C#5, B4, A4, G4, F4, E4, D4. The final measure contains a whole note chord: E (E4, G#4, B4).

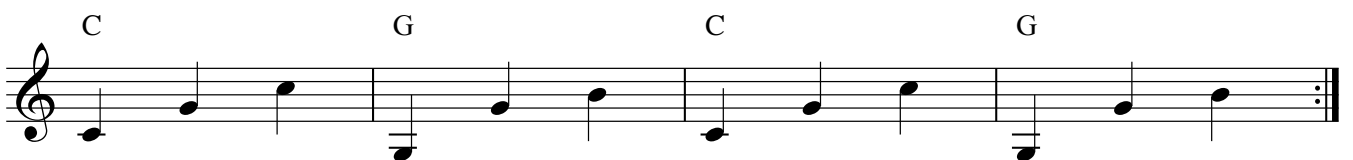
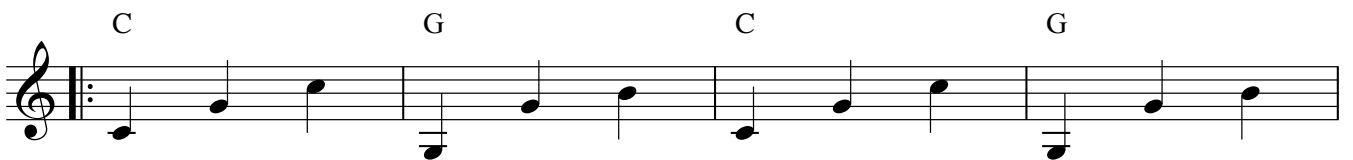
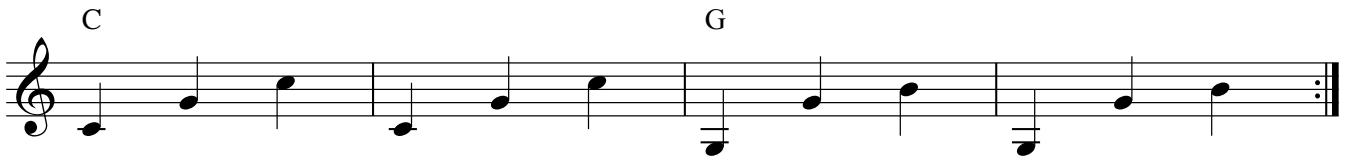
Tokkeloefeningen met akkoorden, p i m

The image displays a musical score for a piece titled "Tokkeloefeningen met akkoorden, p i m". The score is written for a single melodic line on a treble clef staff, with a 2/4 time signature. It consists of six systems of music, each containing a staff of notes and a staff of chords. The chords are indicated by letters above the notes: Am, C, and E. The notes are primarily quarter notes, with some eighth notes in the final measures of each system. The chords are placed below the notes, with a vertical line connecting them to the notes they apply to. The first system is marked with "Am" and the second with "C". The third system is marked with "E". The fourth system is marked with "E". The fifth system is marked with "E". The sixth system is marked with "E". The notes are: System 1: G4, A4, B4, C5, D5, E5, F5, G5, A5, B5, C6, D6, E6, F6, G6, A6, B6, C7, D7, E7, F7, G7, A7, B7, C8, D8, E8, F8, G8, A8, B8, C9, D9, E9, F9, G9, A9, B9, C10, D10, E10, F10, G10, A10, B10, C11, D11, E11, F11, G11, A11, B11, C12, D12, E12, F12, G12, A12, B12, C13, D13, E13, F13, G13, A13, B13, C14, D14, E14, F14, G14, A14, B14, C15, D15, E15, F15, G15, A15, B15, C16, D16, E16, F16, G16, A16, B16, C17, D17, E17, F17, G17, A17, B17, C18, D18, E18, F18, G18, A18, B18, C19, D19, E19, F19, G19, A19, B19, C20, D20, E20, F20, G20, A20, B20, C21, D21, E21, F21, G21, A21, B21, C22, D22, E22, F22, G22, A22, B22, C23, D23, E23, F23, G23, A23, B23, C24, D24, E24, F24, G24, A24, B24, C25, D25, E25, F25, G25, A25, B25, C26, D26, E26, F26, G26, A26, B26, C27, D27, E27, F27, G27, A27, B27, C28, D28, E28, F28, G28, A28, B28, C29, D29, E29, F29, G29, A29, B29, C30, D30, E30, F30, G30, A30, B30, C31, D31, E31, F31, G31, A31, B31, C32, D32, E32, F32, G32, A32, B32, C33, D33, E33, F33, G33, A33, B33, C34, D34, E34, F34, G34, A34, B34, C35, D35, E35, F35, G35, A35, B35, C36, D36, E36, F36, G36, A36, B36, C37, D37, E37, F37, G37, A37, B37, C38, D38, E38, F38, G38, A38, B38, C39, D39, E39, F39, G39, A39, B39, C40, D40, E40, F40, G40, A40, B40, C41, D41, E41, F41, G41, A41, B41, C42, D42, E42, F42, G42, A42, B42, C43, D43, E43, F43, G43, A43, B43, C44, D44, E44, F44, G44, A44, B44, C45, D45, E45, F45, G45, A45, B45, C46, D46, E46, F46, G46, A46, B46, C47, D47, E47, F47, G47, A47, B47, C48, D48, E48, F48, G48, A48, B48, C49, D49, E49, F49, G49, A49, B49, C50, D50, E50, F50, G50, A50, B50, C51, D51, E51, F51, G51, A51, B51, C52, D52, E52, F52, G52, A52, B52, C53, D53, E53, F53, G53, A53, B53, C54, D54, E54, F54, G54, A54, B54, C55, D55, E55, F55, G55, A55, B55, C56, D56, E56, F56, G56, A56, B56, C57, D57, E57, F57, G57, A57, B57, C58, D58, E58, F58, G58, A58, B58, C59, D59, E59, F59, G59, A59, B59, C60, D60, E60, F60, G60, A60, B60, C61, D61, E61, F61, G61, A61, B61, C62, D62, E62, F62, G62, A62, B62, C63, D63, E63, F63, G63, A63, B63, C64, D64, E64, F64, G64, A64, B64, C65, D65, E65, F65, G65, A65, B65, C66, D66, E66, F66, G66, A66, B66, C67, D67, E67, F67, G67, A67, B67, C68, D68, E68, F68, G68, A68, B68, C69, D69, E69, F69, G69, A69, B69, C70, D70, E70, F70, G70, A70, B70, C71, D71, E71, F71, G71, A71, B71, C72, D72, E72, F72, G72, A72, B72, C73, D73, E73, F73, G73, A73, B73, C74, D74, E74, F74, G74, A74, B74, C75, D75, E75, F75, G75, A75, B75, C76, D76, E76, F76, G76, A76, B76, C77, D77, E77, F77, G77, A77, B77, C78, D78, E78, F78, G78, A78, B78, C79, D79, E79, F79, G79, A79, B79, C80, D80, E80, F80, G80, A80, B80, C81, D81, E81, F81, G81, A81, B81, C82, D82, E82, F82, G82, A82, B82, C83, D83, E83, F83, G83, A83, B83, C84, D84, E84, F84, G84, A84, B84, C85, D85, E85, F85, G85, A85, B85, C86, D86, E86, F86, G86, A86, B86, C87, D87, E87, F87, G87, A87, B87, C88, D88, E88, F88, G88, A88, B88, C89, D89, E89, F89, G89, A89, B89, C90, D90, E90, F90, G90, A90, B90, C91, D91, E91, F91, G91, A91, B91, C92, D92, E92, F92, G92, A92, B92, C93, D93, E93, F93, G93, A93, B93, C94, D94, E94, F94, G94, A94, B94, C95, D95, E95, F95, G95, A95, B95, C96, D96, E96, F96, G96, A96, B96, C97, D97, E97, F97, G97, A97, B97, C98, D98, E98, F98, G98, A98, B98, C99, D99, E99, F99, G99, A99, B99, C100, D100, E100, F100, G100, A100, B100, C101, D101, E101, F101, G101, A101, B101, C102, D102, E102, F102, G102, A102, B102, C103, D103, E103, F103, G103, A103, B103, C104, D104, E104, F104, G104, A104, B104, C105, D105, E105, F105, G105, A105, B105, C106, D106, E106, F106, G106, A106, B106, C107, D107, E107, F107, G107, A107, B107, C108, D108, E108, F108, G108, A108, B108, C109, D109, E109, F109, G109, A109, B109, C110, D110, E110, F110, G110, A110, B110, C111, D111, E111, F111, G111, A111, B111, C112, D112, E112, F112, G112, A112, B112, C113, D113, E113, F113, G113, A113, B113, C114, D114, E114, F114, G114, A114, B114, C115, D115, E115, F115, G115, A115, B115, C116, D116, E116, F116, G116, A116, B116, C117, D117, E117, F117, G117, A117, B117, C118, D118, E118, F118, G118, A118, B118, C119, D119, E119, F119, G119, A119, B119, C120, D120, E120, F120, G120, A120, B120, C121, D121, E121, F121, G121, A121, B121, C122, D122, E122, F122, G122, A122, B122, C123, D123, E123, F123, G123, A123, B123, C124, D124, E124, F124, G124, A124, B124, C125, D125, E125, F125, G125, A125, B125, C126, D126, E126, F126, G126, A126, B126, C127, D127, E127, F127, G127, A127, B127, C128, D128, E128, F128, G128, A128, B128, C129, D129, E129, F129, G129, A129, B129, C130, D130, E130, F130, G130, A130, B130, C131, D131, E131, F131, G131, A131, B131, C132, D132, E132, F132, G132, A132, B132, C133, D133, E133, F133, G133, A133, B133, C134, D134, E134, F134, G134, A134, B134, C135, D135, E135, F135, G135, A135, B135, C136, D136, E136, F136, G136, A136, B136, C137, D137, E137, F137, G137, A137, B137, C138, D138, E138, F138, G138, A138, B138, C139, D139, E139, F139, G139, A139, B139, C140, D140, E140, F140, G140, A140, B140, C141, D141, E141, F141, G141, A141, B141, C142, D142, E142, F142, G142, A142, B142, C143, D143, E143, F143, G143, A143, B143, C144, D144, E144, F144, G144, A144, B144, C145, D145, E145, F145, G145, A145, B145, C146, D146, E146, F146, G146, A146, B146, C147, D147, E147, F147, G147, A147, B147, C148, D148, E148, F148, G148, A148, B148, C149, D149, E149, F149, G149, A149, B149, C150, D150, E150, F150, G150, A150, B150, C151, D151, E151, F151, G151, A151, B151, C152, D152, E152, F152, G152, A152, B152, C153, D153, E153, F153, G153, A153, B153, C154, D154, E154, F154, G154, A154, B154, C155, D155, E155, F155, G155, A155, B155, C156, D156, E156, F156, G156, A156, B156, C157, D157, E157, F157, G157, A157, B157, C158, D158, E158, F158, G158, A158, B158, C159, D159, E159, F159, G159, A159, B159, C160, D160, E160, F160, G160, A160, B160, C161, D161, E161, F161, G161, A161, B161, C162, D162, E162, F162, G162, A162, B162, C163, D163, E163, F163, G163, A163, B163, C164, D164, E164, F164, G164, A164, B164, C165, D165, E165, F165, G165, A165, B165, C166, D166, E166, F166, G166, A166, B166, C167, D167, E167, F167, G167, A167, B167, C168, D168, E168, F168, G168, A168, B168, C169, D169, E169, F169, G169, A169, B169, C170, D170, E170, F170, G170, A170, B170, C171, D171, E171, F171, G171, A171, B171, C172, D172, E172, F172, G172, A172, B172, C173, D173, E173, F173, G173, A173, B173, C174, D174, E174, F174, G174, A174, B174, C175, D175, E175, F175, G175, A175, B175, C176, D176, E176, F176, G176, A176, B176, C177, D177, E177, F177, G177, A177, B177, C178, D178, E178, F178, G178, A178, B178, C179, D179, E179, F179, G179, A179, B179, C180, D180, E180, F180, G180, A180, B180, C181, D181, E181, F181, G181, A181, B181, C182, D182, E182, F182, G182, A182, B182, C183, D183, E183, F183, G183, A183, B183, C184, D184, E184, F184, G184, A184, B184, C185, D185, E185, F185, G185, A185, B185, C186, D186, E186, F186, G186, A186, B186, C187, D187, E187, F187, G187, A187, B187, C188, D188, E188, F188, G188, A188, B188, C189, D189, E189, F189, G189, A189, B189, C190, D190, E190, F190, G190, A190, B190, C191, D191, E191, F191, G191, A191, B191, C192, D192, E192, F192, G192, A192, B192, C193, D193, E193, F193, G193, A193, B193, C194, D194, E194, F194, G194, A194, B194, C195, D195, E195, F195, G195, A195, B195, C196, D196, E196, F196, G196, A196, B196, C197, D197, E197, F197, G197, A197, B197, C198, D198, E198, F198, G198, A198, B198, C199, D199, E199, F199, G199, A199, B199, C200, D200, E200, F200, G200, A200, B200, C201, D201, E201, F201, G201, A201, B201, C202, D202, E202, F202, G202, A202, B202, C203, D203, E203, F203, G203, A203, B203, C204, D204, E204, F204, G204, A204, B204, C205, D205, E205, F205, G205, A205, B205, C206, D206, E206, F206, G206, A206, B206, C207, D207, E207, F207, G207, A207, B207, C208, D208, E208, F208, G208, A208, B208, C209, D209, E209, F209, G209, A209, B209, C210, D210, E210, F210, G210, A210, B210, C211, D211, E211, F211, G211, A211, B211, C212, D212, E212, F212, G212, A212, B212, C213, D213, E213, F213, G213, A213, B213, C214, D214, E214, F214, G214, A214, B214, C215, D215, E215, F215, G215, A215, B215, C216, D216, E216, F216, G216, A216, B216, C217, D217, E217, F217, G217, A217, B217, C218, D218, E218, F218, G218, A218, B218, C219, D219, E219, F219, G219, A219, B219, C220, D220, E220, F220, G220, A220, B220, C221, D221, E221, F221, G221, A221, B221, C222, D222, E222, F222, G222, A222, B222, C223, D223, E223, F223, G223, A223, B223, C224, D224, E224, F224, G224, A224, B224, C225, D225, E225, F225, G225, A225, B225, C226, D226, E226, F226, G226, A226, B226, C227, D227, E227, F227, G227, A227, B227, C228, D228, E228, F228, G228, A228, B228, C229, D229, E229, F229, G229, A229, B229, C230, D230, E230, F230, G230, A230, B230, C231, D231, E231, F231, G231, A231, B231, C232, D232, E232, F232, G232, A232, B232, C233, D233, E233, F233, G233, A233, B233, C234, D234, E234, F234, G234, A234, B234, C235, D235, E235, F235, G235, A235, B235, C236, D236, E236, F236, G236, A236, B236, C237, D237, E237, F237, G237, A237, B237, C238, D238, E238, F238, G238, A238, B238, C239, D239, E239, F239, G239, A239, B239, C240, D240, E240, F240, G240, A240, B240, C241, D241, E241, F241, G241, A241, B241, C242, D242, E242, F242, G242, A242, B242, C243, D243, E243, F243, G243, A243, B243, C244, D244, E244, F244, G244, A244, B244, C245, D245, E245, F245, G245, A245, B245, C246, D246, E246, F246, G246, A246, B246, C247, D247, E247, F247, G247, A247, B247, C248, D248, E248, F248, G248, A248, B248, C249, D249, E249, F249, G249, A249, B249, C250, D250, E250, F250, G250, A250, B250, C251, D251, E251, F251, G251, A251, B251, C252, D252, E252, F252, G252, A252, B252, C253, D253, E253, F253, G253, A253, B253, C254, D254, E254, F254, G254, A254, B254, C255, D255, E255, F255, G255, A255, B255, C256, D256, E256, F256, G256, A256, B256, C257, D257, E257, F257, G257, A257, B257, C258, D258, E258, F258, G258, A258, B258, C259, D259, E259, F259, G259, A259, B259, C260, D260, E260, F260, G260, A260, B260, C261, D261, E261, F261, G261, A261, B261, C262, D262, E262, F262, G262, A262, B262, C263, D263, E263, F263, G263, A263, B263, C264, D264, E264, F264, G264, A264, B264, C265, D265, E265, F265, G265, A265, B265, C266, D266, E266, F266, G266, A266, B266, C267, D267, E267, F267, G267, A267, B267, C268, D268, E268, F268, G268, A268, B268, C269, D269, E269, F269, G269, A269, B269, C270, D270, E270, F270, G270, A270, B270, C271, D271, E271, F271, G271, A271, B271, C272, D272, E272, F272, G272, A272, B272, C273, D273, E273, F273, G273, A273, B273, C274, D274, E274, F274, G274, A274, B274, C275, D275, E275, F275, G275, A275, B275, C276, D276, E276, F276, G276, A276, B276, C277, D277, E277, F277, G277, A277, B277, C278, D278, E278, F278, G278, A278, B278, C279, D279, E279, F279, G279, A279, B279, C280, D280, E280, F280, G280, A280, B280, C281, D281, E281, F281, G281, A281, B281, C282, D282, E282, F282, G282, A282, B282, C283, D283, E283, F283, G283, A283, B283, C284, D284, E284, F284, G284, A284, B284, C285, D285, E285, F285, G285, A285, B285, C286, D286, E286, F286, G286, A286, B286, C287, D287, E287, F287, G287, A287, B287, C288, D288, E288, F288, G288, A288, B288, C289, D289, E289, F289, G289, A289, B289, C290, D290, E290, F290, G290, A290, B290, C291, D291, E291, F291, G291, A291, B291, C292, D292, E292, F292, G292, A292, B292, C293, D293, E293, F293, G293, A293, B293, C294, D294, E294, F294, G294, A294, B294, C295, D295, E295, F295, G295, A295, B295, C296, D296, E296, F296, G296, A296, B296, C297, D297, E297, F297, G297, A297, B297, C298, D298, E298, F298, G298, A298, B298, C299, D299, E299, F299, G299, A299, B299, C300, D300, E300, F300, G300, A300, B300, C301, D301, E301, F301, G301, A301, B301, C302, D302, E302, F302, G302, A302, B302, C303, D303, E303, F303, G303, A303, B303, C304, D304, E304, F304, G304, A304, B304, C305, D305, E305, F305, G305, A305, B305, C306, D306, E306, F306, G306, A306, B306, C307, D307, E307, F307, G307, A307, B307, C308, D308, E308, F308, G308, A308, B308, C309, D309, E309, F309, G309, A309, B309, C310, D310, E310, F310, G310, A310, B310, C311, D311, E311, F311, G311, A311, B311, C312, D312, E312, F312, G312, A312, B312, C313, D313, E313, F313, G313, A313, B313, C314, D314, E314, F314, G314, A314, B314, C315, D315, E315, F315, G315, A315, B315, C316, D316, E316, F316, G316, A316, B316, C317, D317, E317, F317, G317, A317, B317, C318, D318, E318, F318, G318, A318, B318, C319, D319, E319, F319, G319, A319, B319, C320, D320, E320, F320, G320, A320, B320, C321, D321, E321, F321, G321, A321, B321, C322, D322, E322, F322, G322, A322, B322, C323, D323, E323, F323, G323, A323, B323, C324, D324, E324, F324, G324, A324, B324, C325, D325, E325, F325, G325, A325, B325, C326, D326, E326, F326, G326, A326, B326, C327, D327, E327, F327, G327, A327, B327, C328, D328, E328, F328, G328, A328, B328, C329, D329, E329, F329, G329, A329, B329, C330, D330, E330, F330, G330, A330, B330, C331, D331, E331, F331, G331, A331, B331, C332, D332, E332, F332, G332, A332, B332, C333, D333, E333, F333, G333, A333, B333, C334, D334, E334, F334, G334, A334, B334, C335, D335, E335, F335, G335, A335, B335, C336, D336, E336, F336, G336, A336, B336, C337, D337, E337, F337, G337, A337, B337, C338, D338, E338, F338, G338, A338, B338, C339, D339, E339, F339, G339, A339, B339, C340, D340, E340, F340, G340, A340, B340, C341, D341, E341, F341, G341, A341, B341, C342, D342, E342, F342, G342, A342, B342, C343, D343, E343, F343, G343, A343, B343, C344, D344, E344, F344, G344, A344, B344, C345, D345, E345, F345, G345, A345, B345, C346, D346, E346, F346, G346, A346, B346, C347, D347, E347, F347, G347, A347, B347, C348, D348, E348, F348, G348, A348, B348, C349, D349, E349, F349, G349, A349, B349, C350, D350, E350, F350, G350, A350, B350, C351, D351, E351, F351, G351, A351, B351, C352, D352, E352, F352, G352, A352, B352, C353, D353, E353, F353, G353, A353, B353, C354, D354, E354, F354, G354, A354, B354, C355, D355, E355, F355, G355, A355, B355, C356, D356, E356, F356, G356, A356, B356, C357, D357, E357, F357, G357, A357, B357, C358, D358, E358, F358, G358, A358, B358, C359, D359, E359, F359, G359, A359, B359, C360, D360, E360, F360, G360, A360, B360, C361, D361, E361, F361, G361, A361, B361, C362, D362, E362, F362, G362, A362, B362, C363, D363, E363, F363, G363, A363, B363, C364, D364, E364, F364, G364, A364, B364, C365, D365, E365, F365, G365, A365, B365, C366, D366, E366, F366, G366, A366, B366, C367, D367, E367, F367, G367, A367, B367, C368, D368, E368, F368, G368, A368, B368, C369, D369, E369, F369,

Arpeggio oefeningen

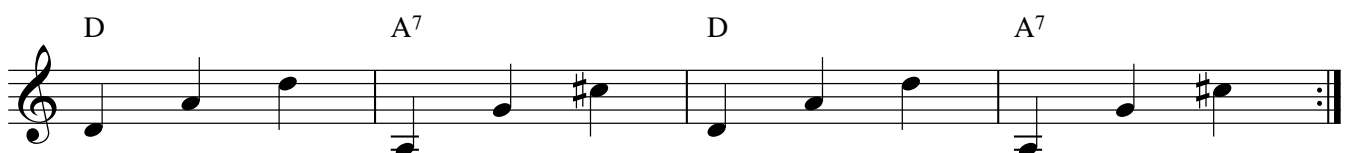
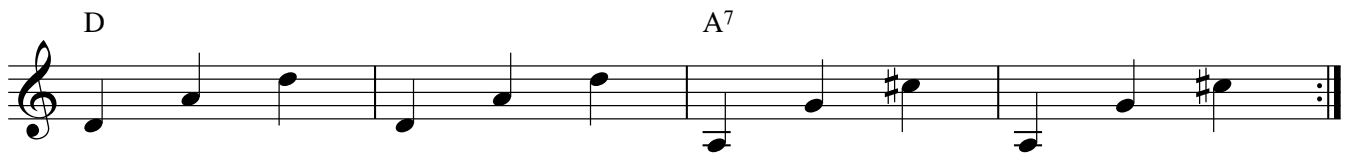
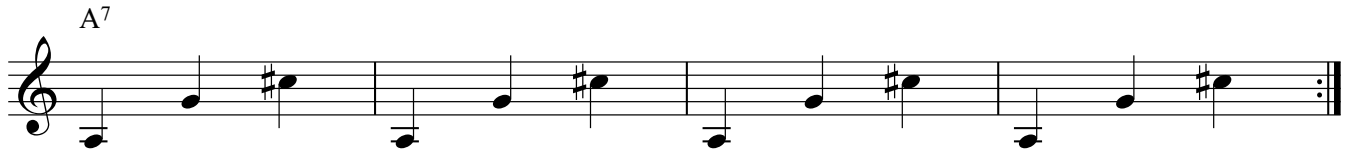
p i m met C en G

Jaromir Cornelius



Arpeggio oefeningen p i m met D en A7

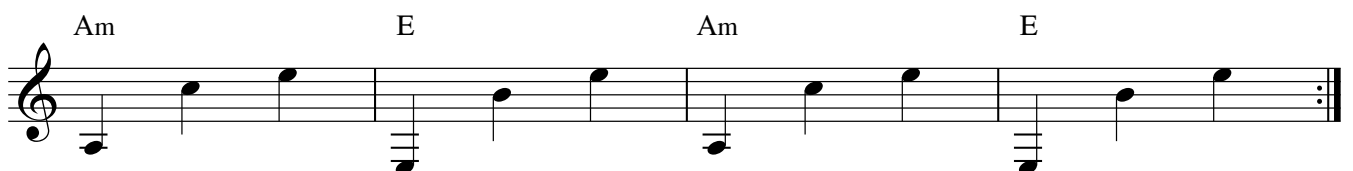
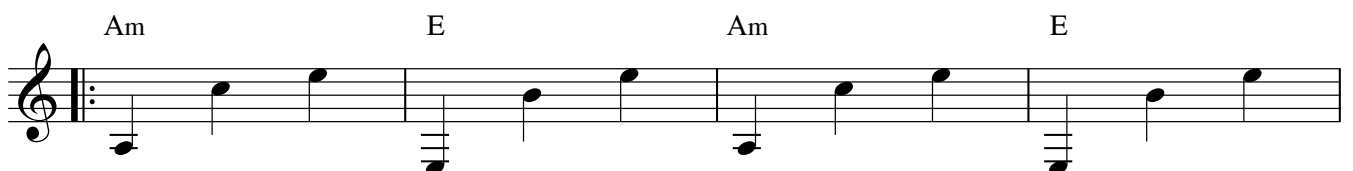
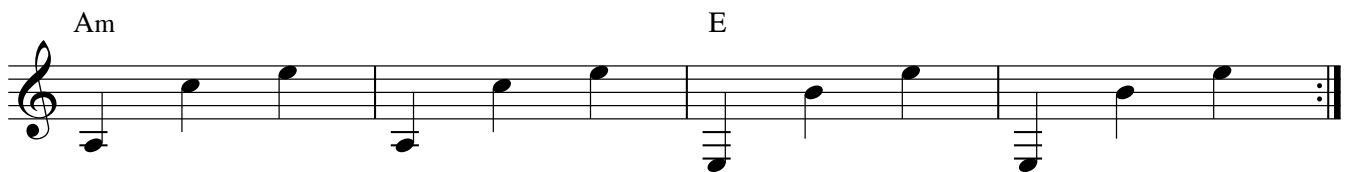
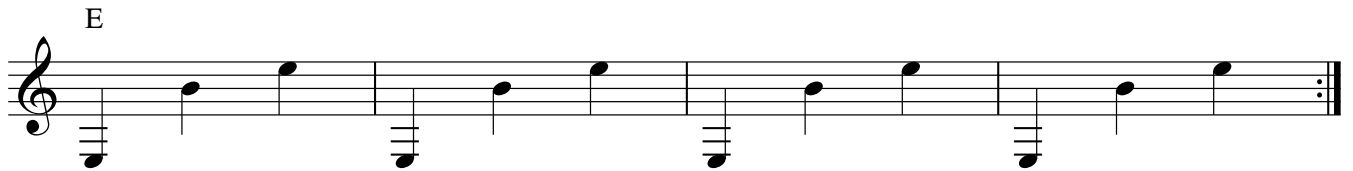
Jaromir Cornelius



Arpeggio oefeningen

p m a met Am en E

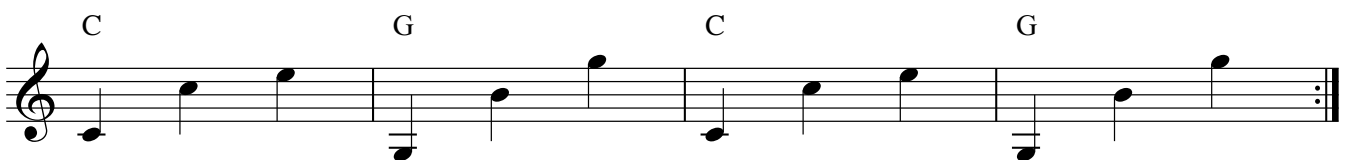
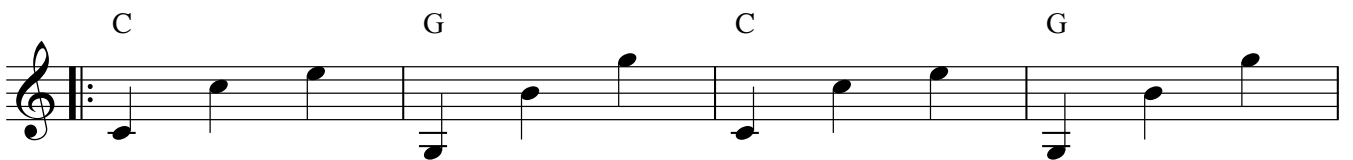
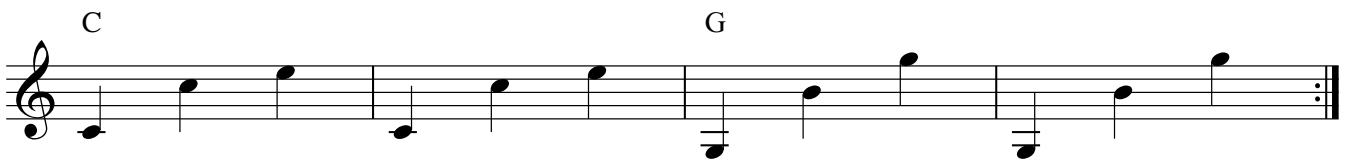
Jaromir Cornelius



Arpeggio oefeningen

p m a met C en G

Jaromir Cornelius



Arpeggio oefeningen

p m a met D en A7

Jaromir Cornelius

D

A7

D A7

D A7

D A7 D A7

D A7 D A7

Tokkeloefeningen met losse snaren

1. m en i, en met a en m.

The first exercise consists of two staves of music. The first staff contains four measures of music: the first two measures feature quarter notes on the strings, and the last two measures feature eighth notes. The second staff contains four measures of music: the first two measures feature quarter notes, and the last two measures feature eighth notes, ending with a double bar line.

2. a, m en i tegelijk.

The second exercise consists of two staves of music. The first staff contains four measures of music: the first two measures feature quarter notes, and the last two measures feature eighth notes. The second staff contains four measures of music: the first two measures feature quarter notes, and the last two measures feature eighth notes, ending with a double bar line.

3. p, i en m. Ook met p, m en a.

The third exercise consists of one staff of music with six measures. The first four measures feature quarter notes, and the last two measures feature eighth notes. There are dynamic markings below the staff: a forte (f) marking under the first measure, a piano (p) marking under the second measure, a forte (f) marking under the fifth measure, and a piano (p) marking under the sixth measure.

4. p i m a tegelijk

The fourth exercise consists of one staff of music with six measures. The first four measures feature quarter notes, and the last two measures feature eighth notes. There are dynamic markings below the staff: a forte (f) marking under the first measure, a piano (p) marking under the second measure, a forte (f) marking under the fifth measure, and a piano (p) marking under the sixth measure.

5. p, i en a, ook met p, i en m.

The fifth exercise consists of one staff of music with six measures. The first four measures feature quarter notes, and the last two measures feature eighth notes. There are dynamic markings below the staff: a forte (f) marking under the first measure, a piano (p) marking under the second measure, a forte (f) marking under the fifth measure, and a piano (p) marking under the sixth measure.

6. Ook met m, i en met m, a en a, m.

Exercise 6 consists of two staves of music. The first staff contains a melody with lyrics 'i m i m i m i m i m i m i m' written above it. The notes are quarter notes, and there are rests between some of them. The second staff is empty.

7.

Exercise 7 consists of one staff of music with lyrics 'a i mi a i mi' written above it. The melody is a sequence of eighth notes, with rests between some of them. The accompaniment consists of chords in the left hand.

8.

Exercise 8 consists of one staff of music with lyrics 'a mi ma mi m' written above it. The melody is a sequence of eighth notes, with rests between some of them. The accompaniment consists of chords in the left hand.

9.

Exercise 9 consists of one staff of music with lyrics 'a m i a m i' written above it. The melody is a sequence of eighth notes, with rests between some of them. The accompaniment consists of chords in the left hand.

Tokkeloefeningen met akkoorden

Am

First staff of music for Am chord exercise. It shows a sequence of chords: Am, Am, Am, Am, G, G, G, G, F, F, F, F, E, E, E, E.

Second staff of music for Am chord exercise. It shows a sequence of chords: E, E, E, E, D, D, D, D, C, C, C, C, B, B, B, B.

C

First staff of music for C chord exercise. It shows a sequence of chords: C, C, C, C, B, B, B, B, A, A, A, A, G, G, G, G.

Second staff of music for C chord exercise. It shows a sequence of chords: F, F, F, F, E, E, E, E, D, D, D, D, C, C, C, C.

E

First staff of music for E chord exercise. It shows a sequence of chords: E, E, E, E, D#m, D#m, D#m, D#m, C#, C#, C#, C#, B, B, B, B, A, A, A, A.

Second staff of music for E chord exercise. It shows a sequence of chords: G, G, G, G, F#, F#, F#, F#, E, E, E, E, D, D, D, D.

Speel ook oefening 2 t/m 9 met diverse akkoorden.

Trieste wals in E mineur

versie 1

Ine Janssen

1

5

9

13

17

21

25

29

Trieste wals in E mineur

versie 2

Ine Janssen

5 2 1
1 3

9

13

17

21 Am

25

29 rit.

Trieste wals in E mineur

versie 2

Ine Janssen

5 2 1
1 3

9

13

17

21 Am

25

29

4

rit.